



Mineralogical Society of Western Australia Inc May 2010 Newsletter

Editorial

Thanks to Barbara Donati for supplying the report on the gemboree, and thanks to Michael Pope for supplying photos from the gemboree. Photographs in this newsletter have been reduced in size and are not suitable for enlargement. Members are reminded that short adverts are provided free of charge to members.

Contents

	page
Editorial	1
Contents	1
February Meeting	1
Future Meetings	1
Joint Mineralogical Societies of Australasia 33rd Annual Seminar	1
Reports	
Gemboree 2010, Devonport, Tasmania by Barbara Donati	2
Photos for Gemboree by Michael Pope (Tasmania)	2
Field Trips	4
Committee and contact details	4

June Meeting - Wednesday 2nd June 2010

Starting at 7:30 pm at the WA Lapidary Club rooms 31 Gladstone Road Rivervale.

Speaker: Alex Bevan

Topic: "Mineralogical Aspects of Impact Cratering"

. Visitors are welcome.

2010 Future Meeting Dates

Wednesday 4th August 2010 – Speaker Sue Koepke on "Japan-law Twinning in Quartz"

Wednesday 6th October 2010 – Speaker to be advised

Wednesday 1st December 2010 Christmas Meeting. Speaker Margot Willing. Topic to be announced

The next Joint Mineralogical Societies of Australasia 33rd Annual Seminar will be held in Adelaide 2010 over the June long weekend

Saturday 12 June, Sunday 13 June and Monday 14 June 2010

There are 15 speakers (2 from WA). Alex Bevan will speak on The Simpson Collection and other WA collectors while Peter Downes will speak on The Fletcher Collection. Other topics include early literature on Australian Mineral collections, Mawson's Minerals, collecting unusual minerals, new minerals from old collections, etc.

There are 2 field trips. A one day field trip to Mount Malvern Mine, a silver lead copper mine at Claredon.

Possible minerals at this locality include galena, cerussite, anglesite, azurite, malachite and diableite mostly as micros. The second field trip is 2 days plus travel time to the Olary region and includes the Paratoo and Mutooroo copper mines. Paratoo is about 285Km from Adelaide on the Broken Hill road Mutooroo is 60Km west of Broken Hill. The Paratoo mine is the type locality for decrespignyite-(Y) and paratooite-(La), other rare-earth and copper minerals (including malachite and chrysocolla) may also be found here. At Mutooroo native copper, cuprite, malachite, pink and white calcite may be found.

Gemboree 2010, Devonport, Tasmania by Barbara Donati

This report has also been submitted to the Rockhunter of the WA Lapidary Club

The Gemboree was well planned and run. There were over 500 competition entries. WA Lapidary had 19 entries. Most of these entries had to be hand carried and entered on Thursday afternoon. These entries included fossils, enamelling (non-jewelry), carvings, and mineral specimens. These had to be judged on Thursday evening.

The Official Opening was at 12 noon in the Sports Centre. The competition cases lined one side of the basketball stadium with all the stalls of the commercial dealers filling the rest of the space. The crowds were not the best for 2 days, but filled the stadium on Monday. Minerals as well as fossils and diamonds were available. Books, lapidary equipment, journals, etc were for sale.

The 'Tail Gaters' were outside on a grassed area. Rock, fossils, minerals, and microscopes were for sale. There were about 30 stalls, with one selling analytical scales. This was the bargain area. There was a lecture on minerals and their formation. Also one on fern fossils mainly from the Lune River. These were held in a near by hall which also held the micromount gathering.

Monday was the field trip to a Crocoite mine and then on to the Mineral Museum in Zeehan.. We left at 7:30 for the drive to Dundas. The first visit was to the Adelaide Mine. Only 3 - 4 could go together into the mine at a time. The rest of the 21 of us fossicked the grounds where the crocoite/mud was washed. Some did digging in the heaps. While we were there another nearby miner invited us to visit his mine. So after many pictures and a barbeque lunch, we went to another crocoite mine. He also had some stichtite and large lead 'balls' we were free to accumulate!!! Even though the light was fading, we got nice pictures of the beautiful countryside on the long way home. We got back at 7:30pm. We were all very happy with our rock collecting.

WA Lapidary Club won prizes in the enamelling and rock carving competition. Eileen Foote won a first in the novice non-jewelry with a bowl. Barbara Donati won second and third in the same class with two coasters. Margaret Mahr got a Highly Recommended in that class.

Eileen Foote also got a second in the novice Jewelry while narrowly missing a third as well for her two pendants...Irene De Bruyn got a Highly Recommended for her necklace. in that class. Mary Johnson won a third for her Butterfly in the Novelty Gemcraft and Highly Recommended for her two carvings.

The Social Activities of the Gemboree were a wine and cheese tasting, live music for a dance night, as well as a quiz night. These were well attended as they were held near where the caravans and campers were on the high school grounds. There was also the traditional sausage sizzle on Easter Sunday with pancakes cooked by the Gemboree Manager, Pam. This was before the Easter Hat Parade.

Pam Carter with her competition and activities committees did a wonderful job and also participated in the social events.

Photos of Gemboree by Michael Pope (Tasmania)



Camping for Gemboree



Inside the hall at the Gemboree



Saturday night fancy dress – Barbara on right



One of Barbaras displays (top left)



Trader - Crystal Universe



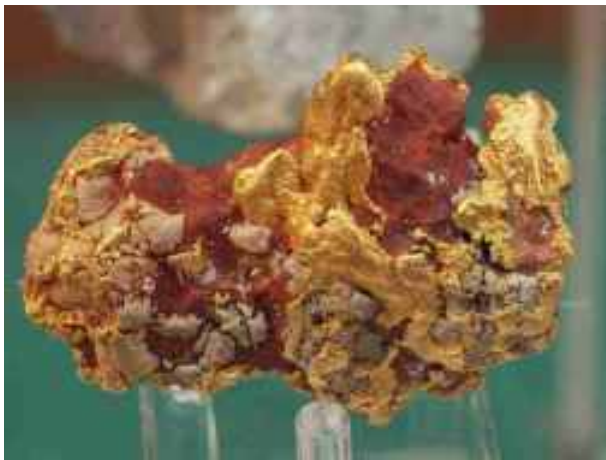
Trader Dehne McLaughlin



Tail gaiting



Trader - Peter Beckwith (Crystal Habit)



Trader Dehne McLaughlin



Trader Richard Wolf (Adelaide Mine)

FIELD TRIPS 2010

By arrangement members of the mineralogical society are able to go on field trips organized by the Western Australia Lapidary and Rockhunting Club inc. Please register with MINSOC Field Trip organizers prior to attending any of the following events, but only if you are a current (financial) MINSOCWA member to confirm event details.

THE WESTERN AUSTRALIAN LAPIDARY AND ROCKHUNTING CLUB INC. 31-35 Gladstone Road, Rivervale, 6103. Rivervale W.A.	
PROPOSED 2010 ACTIVITIES & EVENTS	
June	Exhibitions
July	Sat 3 to Sun 18 East Pilbara Area
Aug	15 (Sunday) Byford Area
Sept	25-27 Wildflower trip Eneabba Area
Oct	24 Northam Area
Nov	14
Further 2010 activities and events will be published during the year	

Committee Members	
Stewart Cole - President ph 0414 904 169	Ben Grguric
Sue Koepke - Secretary/Treasurer ph 0417 990 688	Allan Hart - Newsletter Editor
Mignonne Clark - Vice President ph 0418 955 974	Frank Radke
Field trip officer - vacant	Susan Stockmayer
Society e-mail addresses	
All correspondence (excluding the newsletter): minsocwa@hotmail.com	
Mineralogical Society WA Newsletter : minsocwa.newsletter@hotmail.com	