

THE LINE FROM THE LODGE



Volume 10, Issue 3

September 2009

The Newsletter of The Broken Hill Mineral Club Inc.

PO Box 747 Broken Hill. NSW. 2880. (ABN:11502101481)

Inside This issue

- A Brief History of the Broken Hill Mineral Club.
- Gem and Mineral Show Program
- Show Sponsorship Thank you
- What to See While in Broken Hill

SUBSCRIPTIONS

2009 Annual Membership to the Broken Hill Mineral Club Inc. is as follows

Full Membership - \$25
Associate Membership - \$15
Family Membership - \$40
Child Under 16 - \$5
Newsletter Subscription - \$5

For Community Inc. Membership add an extra \$3.50 per person

ROCK - ON 2009 EDITION

Hello everyone and welcome to the special edition for the 2009 Gem and Mineral Show.

This year we have moved to a new location and for the first time we have use of a pavilion for indoor traders. While we have expanded our show, we have not forgotten that outback country atmosphere our past shows have been famous for providing to all that came along and we hope to maintain the expectation of friendly hospitality again this year.

As with previous shows we will run field trips on both the Monday and Tuesday following the show to fossicking areas around Broken Hill and anyone wishing to attend these can sign up at the show office in the pavilion on either Saturday or Sunday.

If there is any need of help our members will be on site for assistance. There will be a manned information desk in the centre of the Pavilion where registrations can be taken and many information brochures and flyers are available at this desk.

For the evenings we have guest speakers on both Friday and Saturday nights.

Friday - Trevor Dart, our Vice President and Senior Field Officer, will present a talk on the geology of the Broken Hill District and how and where this relates to the minerals found, including the main line of lode.

Saturday night will be Bob Johnson from the Geological Survey who will talk on the History of the Mines. Barney Stevens, who has just retired after many years with the Geological Survey, will talk on the Plight of the Darling River. Both speakers will also have time allocated for questions at the end of their presentations.

Hopefully, the weather gods will smile on us for the weekend (especially since they bought the dust storm from hell this week) and all will be fine for the event.

Enjoy your time in Broken Hill, take the time to see a much of our unique city and most of all have fun.

Happy Fossicking...

TD

CLUB CONTACT DETAILS

PRESIDENT

Mr Les Creswick
347 Chloride Street.
Ph: (08) 8087 5460

SECRETARY

Mrs Carol Weber
502 Radium St
Ph: (08) 8087 2983

POSTAL ADDRESS

PO Box 747 Broken Hill.
New South Wales.
Australia. 2880

VICE PRESIDENT & NEWSLETTER EDITOR

Mr Trevor Dart
405 Chapple Street
Ph: (08) 8088 7907

SENIOR FIELD OFFICER

Mr Trevor Dart

EMAIL

bhminclub@inet.net.au

WEBSITE

<http://brokenhillmineralclub.wikispaces.com>



A Brief History Of The Broken Hill Mineral Club

For those new to the club and to those who can't remember...This is a brief story about the formation and history of current Broken Hill Mineral Club

With the interest in and collecting of Broken Hill's minerals going right back to the start of the mines, Broken Hill has had active mineral and / or lapidary groups on and off for over a hundred years.

Many small groups existed in the first fifty years of mining as collections grew and specimens changed hands. Little information, however is recorded about these groups.

The first lapidary group was started at the High School in the early 1960's by Allan Ireland. He along with Don Watson (a geologist then working at the North Mine) led rockhounds around the district in search of material to places such as his own garnet mine at Thackaringa.

Around the same time several mineral collectors were regularly meeting at Albert "Flossie" Campbell's house. Here fine mineral samples from the Broken Hill mines or from all around the world were admired, discussed and swapped. Unfortunately, with the death of these men the associations they founded also folded.

The idea of a new club for the current collectors started around fifteen years ago, with a few people interested in minerals meeting at Bernad Williams' house. A few meetings were held but unfortunately this group also did not last.

For a club to stay active they needed neutral ground. A place to meet was needed that was not a fellow collector's house.

In May 2000 Trevor Dart and Tony Webster - the then curator at the geocentre, invited the local collectors to a meeting and the current club was formed. Meetings were held at the geocentre and Trevor was elected the founding president with Tony as Secretary—Treasurer.

This arrangement existed for the first two years however the venue of the geocentre did not suit the expanding needs of the club and rooms were sought to set up a permanent mineral display and house newly purchased lapidary equipment.

After a stroke of luck along with being in the right place at the right time, the Line of Lode Association offered the club a large room that was the old carpenter's shop on the South Mine lease. The club gratefully accepted and moved in. The room needed a bit of work such as a new floor, work benches, the water connected, etc, but with the help of the members these were fixed and the room was furnished. While this was quite an inspirational location - at the base of the twin headframes on a working mining lease - with renewed activity on the Rasp Mine, the club was forced to look for new

premises yet again.

An offer was made by Community Inc, to use their "Green Shed" on their site in Beryl Street. It was soon realised that this shed would need major repairs, so it was demolished and a new shed erected in its place. This has been lined, painted and outfitted for use by our club. With the building phase over, after two years things are finally coming to fruition and workshops are expected to be regular occurrences by the end of this year.

As we head towards our ten year anniversary, we are grateful to all of the different local organisations who have assisted and given support over this time.

Over the last ten years we have organised a variety of activities and had many changes in our membership.

We still, on the third Sunday of the month, conduct field trips to the various mineral collecting localities around Broken Hill and the surrounding district. We have also had overnight or extended field trips such as those to Plumbago and Arkaroola.

With the purchase of lapidary equipment we have conducted cutting, polishing and faceting workshops and with the new clubroom close to ready these will start up again very soon.

Three persons have held the position of club president.

- ◆ Trevor Dart - 2000—2002
- ◆ Bernad Williams - 2003—2004
- ◆ Les Creswick - 2005—2009

With the initiation of a biannual show in 2003, first at Silverton and now at the Events Centre, the current "Rock-On" will be our fourth event. Hoping this year to be bigger and better with the inclusion for the first time of a dealer's hall.

And of the future... There is an aim to continue our various activities with a bias on teaching the skills of the mineral and lapidary arts while fully utilising our clubroom. On field trips we will seek out new collecting locations while still revisiting old favourites.

Our monthly meeting have included numerous guest speakers, demonstrations, rock swaps and mineral competitions.

Our next goal is to reach the younger generation and hopefully attract some new junior members. If this can be done we can develop and encourage their interest so that the club will continue for many years to come.

GEM AND MINERAL SHOW 2009 - PROGRAM

FRIDAY 25TH SEPTEMBER

9:00 AM - 1:00 PM - SET UP STALLS

1:00 PM - 5:00 PM - MINERAL, GEMSTONE,
CRAFT TRADING STALLS OPEN TO
THE GENERAL PUBLIC.

SCHOOL GROUP VISITS BETWEEN
1:30 AND 3:00 PM

8:00 PM - PRESENTATION BY TREVOR DART
ON THE GENERAL GEOLOGY AND THE
MINERALS OF BROKEN HILL

SATURDAY 26TH SEPTEMBER

BREAKFAST AVAILABLE FROM 8 AM.
FOOD STALLS OPEN ALL DAY

9:00 AM - 5:00 PM - MINERAL, GEMSTONE,
CRAFT TRADING STALLS OPEN TO
THE GENERAL PUBLIC.

FIELD TRIP REGISTRATIONS AT
SHOW OFFICE

7:30 PM - 9:00 PM PRESENTATIONS BY
BARNEY STEVENS AND BOB JOHNSON
ON THE HISTORY OF BROKEN HILL
AND THE PLIGHT OF THE DARLING RIVER

SUNDAY 27TH SEPTEMBER

BREAKFAST AVAILABLE FROM 8 AM.
FOOD STALLS OPEN ALL DAY

9:00 AM - 3:00 PM MINERAL, GEMSTONE,
CRAFT TRADING STALLS OPEN TO
THE GENERAL PUBLIC

3:00 PM - PACK UP

~~~~~

## FIELD TRIP Locations

### Monday 28TH SEPTEMBER

#### **RADIUM HILL (TIKALINA STATION) AREA AND THE NEW LUXEMBURG MINES**

9:00 am - 5:00 pm

Full day trip - need to bring a packed lunch.  
Tikalina Station is 90 km from Broken Hill  
Looking for Kyanite, Magnetite, Limonite  
pseudomorphs plus other material.

Assemble at the Information Bay on the  
Adelaide Road

### Tuesday 29TH SEPTEMBER

#### **LIMESTONE STATION**

9:00 am - 1:00 pm

Looking for Gahnite, Lead and Copper minerals,  
Garnets, plus other material.

---

**The Organisers of the Show Wish to Thank the Following People and Businesses for  
they Support and Donations that have helped make this Show Possible.**

Broken Hill Community Centre  
Broken Hill Geocentre  
Broken Hill City Council  
Broken Hill Tourist & Travellers Centre  
Broken Hill High School  
Willyama High School  
Radio 2 Dry FM  
ABC Radio - 2NB

Garry Barlow Builders  
Shannon Electrical  
Lawrelec  
Consolidated Plant and Quarries  
Grassy Gully Enterprises  
De Main Galleries  
Broken Hill Community Foundation  
Southern Cross Television

---

## WHILE IN BROKEN HILL

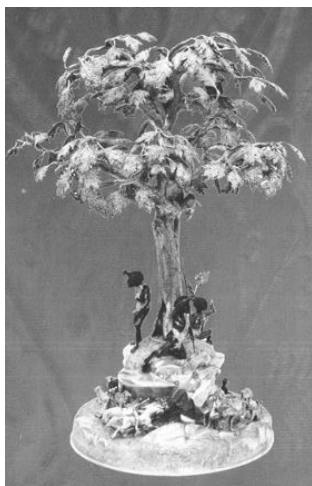
Why not visit any or all of the following attractions. Many of these have mineral displays and / or pieces of Broken Hill's mining history on show. Some entry fees may apply.

### BROKEN HILL'S MINING AND MINERALS MUSEUM

(THE GEOCENTRE)

#### Home of the Silver Tree

Corner of Bromide and  
Crystal Streets  
Open daily  
Monday to Friday  
10:00 am - 4:45 pm  
Saturday and Sunday  
1:00 pm - 4:45 pm



### THE HISTORIC DAYDREAM SILVER MINE UNDERGROUND TOURS

20 km from  
Broken Hill and  
13 km off the  
Silverton Road  
along a scenic  
drive.



Tea room facilities available.

Open 7 days a week  
from 10 am to 3 pm



### RAILWAY & HISTORICAL MUSEUM

Blende Street - diagonally opposite  
the Tourist and Travellers Centre

Includes the Triple Chance Mineral Collection

Open daily 10:00 am - 3:00 pm

### The Milton Lavers Mineral Collection

#### *"100% Broken Hill" Mineral Collection*

Open 7 days a week - **FREE** Admission  
Collectors always welcome to  
View the collection and "talk minerals"  
Minerals for sale or swap  
Always buying quality Broken Hill pieces.

687 Williams Street. Broken Hill  
PH: (08) 8088 2879 for appointment.

### OTHER ATTRACTIONS

- ◆ White's Mineral Art Gallery
- ◆ Miners Memorial and Broken Earth Restaurant
- ◆ Living Desert Reserve and Sculpture Symposium
- ◆ The Big Picture and Silver City Mint

**FOR FURTHER INFORMATION  
ABOUT BROKEN HILL'S  
ATTRACTIONS, KEYS,  
ACCESSIBILITY AND OPENING  
TIMES, PLEASE VISIT THE  
TOURIST AND TRAVELLERS  
CENTRE  
CORNER OF BLENDE AND  
BROMIDE STREETS**